

MINIATURE Integral Filter/Regulators

CFDR55M, CFDR56M Models Port Sizes: 1/8, 1/4



Model Shown: CFDR56M-2

- ◆ Filter and regulator consolidated in a single assembly.
- ◆ Inline mounting.
- ◆ 5- μ m-rated polyethylene filter element; optional sintered bronze elements.
- ◆ High-strength polycarbonate plastic filter bowl; optional aluminum bowl.
- ◆ Internal automatic drain; optional manual drain.
- ◆ Piston-type regulator (CFDR55M models) or diaphragm-type (CFDR56M models).
- ◆ Self-relieving regulator; non-relieving optional.
- ◆ Pressure gauge.
- ◆ NPTF port threads; optional BSPP threads.

SPECIFICATIONS

Ambient/Media Temperature:

40° to 125°F (4° to 52°C).

Body: Aluminum.

Bowl: 2-Ounce (60-ml) capacity polycarbonate plastic; optional aluminum bowl.

Dome and Knob: Glass Filled Nylon and Acetal.

Filter Drain:

Internal automatic drain; optional manual drain.

Filter Element: 5- μ m-rated polyethylene; optional 5- μ m, 20- μ m, or 40- μ m sintered bronze.

Fluid Media: Compressed air.

Inlet Pressure:

15 psig (1 bar) minimum with automatic drain.
Plastic bowl: 150 psig (10 bar) maximum.
Metal bowl: 200 psig (14 bar) maximum.

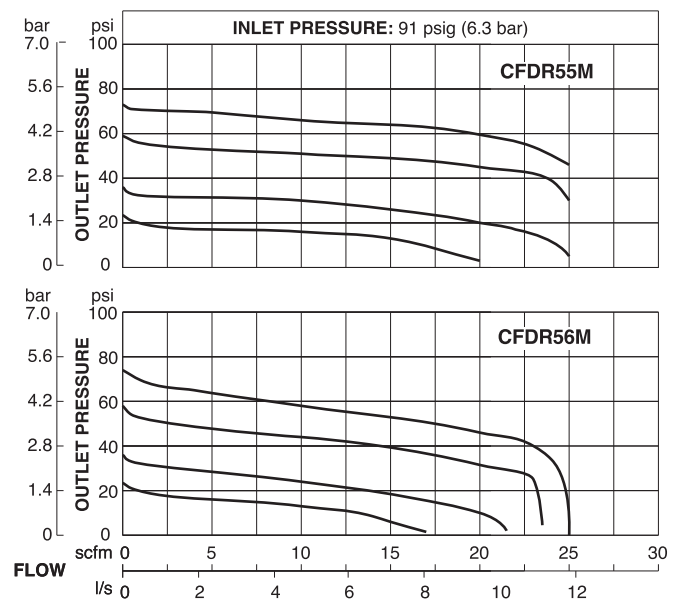
Outlet Pressure: Adjustable up to 100 psig (7 bar).

Pressure Gauge: 0 to 160 psig (11 bar); 1/8 NPT gauge ports front and rear.

Panel Mounting: 1-3/16 inch (30 mm) hole required.

Seals: Nitrile.

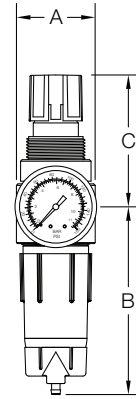
FLOW CHARTS



DIMENSIONS inches (mm)

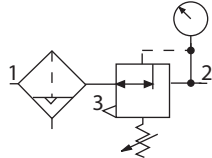
Bowl	Ports	A	B	C	Depth †	Weight †
						lb (kg)
Plastic	1/8, 1/4	1.6 (41)	3.9 (99)	2.6 (67)	1.6 (41)	0.53 (0.24)
Metal	1/8, 1/4	1.6 (41)	4.3 (109)	2.6 (67)	1.6 (41)	0.53 (0.24)

† Less gauge.



ISO Filter/Regulator Symbol

**Automatic Drain
Self-relieving**



REPLACEMENT FILTER ELEMENT KITS

Element Type	Kit Number
5-µm polyethylene (Std element).....	KA130-27PE5
5-µm bronze.....	KA130-27E5
20-µm bronze.....	KA130-27E4
40-µm bronze.....	KA130-27E3

ORDERING INFORMATION

Change the letters in the sample model number below to specify the filter/regulator you want.

B C FD R55M - 2 Y P W

BOWL TYPE

Plastic bowl..... Leave Blank
Metal bowl..... B

FILTER DRAIN

Internal automatic drain..... FD
Manual drain..... F

REGULATOR TYPE

Piston type..... R55M
Diaphragm type..... R56M

PORT SIZE

1/8 NPTF..... 1
1/4 NPTF..... 2

PORT TYPE

NPTF threads..... Leave Blank
BSPF threads..... W

OPTIONS (More than one option can be chosen. Add in alphabetical order)

0-160 psig Gauge..... Leave Blank
No psig Gauge..... NG
Plastic nut..... P
Metal nut..... PN
Hex plastic mounting nut..... PE

OPTIONS (More than one option can be chosen. Add in alphabetical order)

None..... Leave Blank
Non-relieving..... A
Small valve seat (provides lower flow, greater precision)..... C
Metal dome (threaded)..... D
Sintered bronze filter element:
5-µm rating..... E5
20-µm rating..... E4
40-µm rating..... E3

Adjusting springs:

0-125 psig (0-8.6 bar)..... H
0-50 psig (0-3.4 bar)..... L
0-8 psig (0-0.6 bar)..... L8
0-15 psig (0-1.0 bar)..... L15
0-30 psig (0-2.1 bar)..... L30

No Drain (lubricator bowl)..... LDC
(Use Manual Drain Option under BOWL DRAIN section as well)

Tamper-resistant spinning knob (psig preset)..... MV(*)

No gauge ports..... NP
Viton seals..... V

*Insert maximum limited pressure.

MOUNTING BRACKETS

See page 320.